



VISION·EYE

Produced by HUVITECH



**HUMAN
VISION
TECHNOLOGY**

HUVITECH the company, growing up to the world!

www.huvitech.com

Huvitech Product

Vehicle Security Product
Car Blackbox & Mobile DVR
Vehicle Camera

World



CEO MESSAGE ▶▶▶

Achieving our Vision of Becoming a Top Global brand

Huvitech is committed to the development of HUMAN VISION TECHNOLOGY in order to achieve a harmonic connection between society and your safety.

Huvitech Co., Ltd. has concentrated on visual communication systems. We have been manufacturing and exporting vision systems such as Vehicle Camera / Car Blackbox / LCD Monitor / Mobile DVR Systems, Security Systems, Medical Systems and Industrial Systems to many countries. Most of our products are registered in design and patented based on its unique and advanced high technology.

Our employees at HUVITECH have a technical division organized with experts who have worked for over 17 years and have much experience in this field, has continually striven to produce good quality's goods.

We always welcome you and your ideas to make our product better in improvement. They will be the most important advices. We promise that we are always enthusiastically working hard to provide customer satisfaction and earning customers' loyalty through distinguished design, outstanding quality, customer support and relentless innovation with global-management.

Thank you and Best regards,

President & CEO KEVIN LEE

HISTORY ▶▶▶

- 2006** Established Huvitech Inc.
- 2007** Developed Smallest Rear View Cameras (4 Types)
Modified Mobile 1CH & 4CH DVRs
Acquired a Certification of ISO9001
- 2008** Developed 1CH CarBlackbox
Developed 2CH CarBlackbox
Developed Mobile DVR (CF Type & HDD Type)
- 2009** Established Research and Development Department in Corporation
Development of new 2CH CarBlackbox and 4CH CarBlackbox
Supply Rear View Cameras for Camping Car to Car makers in Europe
- 2010** Developing Tilt Camera
Developing New 1~4CH CarBlackbox (B7~B11)
- 2011** Developed Tilt Camera
Developed HD Type CarBlackbox
Developed 540 TV Lines Mini CMOS Camera
- 2012** Developed LCD Type CarBlackbox
Developed 2CH HD CarBlackbox
- 2013** Developed Multi View Mobile Camera
- 2014** Developed 2CH Full HD CarBlackbox
Developed 4CH HD MDVR & HD Cameras
Developed 2CH 3G / 4G CarBlackbox (OBD2 Connector)
- 2015** Developed 4CH AHD MDVR
- 2016** Plan to Develop 1CH Full HD Water-Proof MDVR
Plan to Develop 8CH HD MDVR
- 2017** Developed D19 4CH/8CH AHD MDVR

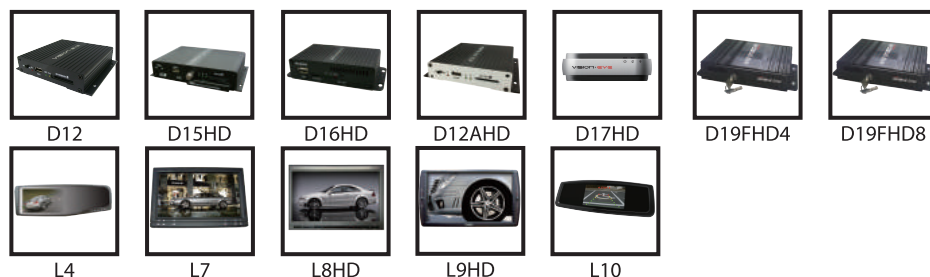
Blackbox



Blackbox Camera



MDVR / Monitor



Mobile Camera



Vehicle Camera



D19FHD4 & 8

I Main Body



4CH/8CH AHD MDVR(HYBRID)

D19FHD4



4CH HYBRID MOBILE DVR

- 4CH Resolution : 720x480@30fps, 1280x720p@30fps, 1920x1080p@30fps
- Storage Type : 2.5" HDD/SSD/SD(Upto 128GB) Memory Card
- Remote Control & Full OSD Menu
- Optional GPS, Wifi / Built-in G-Sensor
- Low Battery Monitoring(Cut-off Function)
- Temperature Working : -0~60°C / Keeping : -40~85°C
- Wifi (App_IOS&Android)
- IOS&Android (Backup, Live Surveillance, Playback, Setting)
- PC Viewer (OS support : Windows XP or higher version)
- Voltage : 12~24V
- Camera Voltage (Output) : 5V or 12V (Selectable)
- Size : 155x136x36mm (Main body)

D19FHD8



8CH HYBRID MOBILE DVR

- 8CH Resolution : 720x480@30fps, 1280x720p@30fps, 1920x1080p@15fps
- Storage Type : 2.5" HDD/SSD/SD(Upto 128GB) Memory Card
- Remote Control & Full OSD Menu
- Optional GPS, Wifi / Built-in G-Sensor
- Low Battery Monitoring(Cut-off Function)
- Temperature Working : -0~60°C / Keeping : -40~85°C
- Wifi (App_IOS&Android)
- IOS&Android (Backup, Live Surveillance, Playback, Setting)
- PC Viewer (OS support : Windows XP or higher version)
- Voltage : 12~24V
- Camera Voltage (Output) : 5V or 12V (Selectable)
- Size : 155x136x36mm (Main body)

CAMERA FOR D19FHD SERIES

VGA 720x480P



M761

VGA /Indoor /5V
54(D)x25(L)x31(H)mm



M731-IR

VGA /IR & Indoor /5V
52(D)x33(L)x27(H)mm



M733-IR

WDR-VGA /IR & Indoor /5V
69(D)x45(L)x30(H)mm



M691

VGA /Water-proof /5V & 12V
21(D)x22(L)x21(H)mm



M721 – SideCam

VGA /Water-proof /5V & 12V
52(D)x28(L)x20(H)mm



M143 & M177

VGA /Water-proof /5V & 12V
M143 : 28(D)x34(L)x26(H)mm



M191 & M611

VGA /Water-proof /5V & 12V
M191 : 39(D)x37(L)x26(H)mm



M290 & M810 & M830 & M430

VGA-IR /Water-proof /12V
CCD or CMOS / IR LED : 7~10PCS

HD 1280x720P



M761HD

HD /Indoor /5V
54(D)x25(L)x31(H)mm



M143HD & M177HD

HD /Water-proof /5V & 12V
M143 : 28(D)x34(L)x26(H)mm



M831HD

HD-IR /Water-proof /5V & 12V
48(D)x38(L)x45(H)mm

FHD 1980x1080P



M761FHD

Full-HD /Indoor /5V
47(D)x30(L)x24(H)mm



M143FHD & M177FHD

Full-HD /Water-proof /5V & 12V
M143 : 28(D)x34(L)x26(H)mm



M291FHD & M831FHD

Full-HD /Water-proof /5V & 12V
2M Pixel / IR LED : 7~10PCS



"Full HD / HD"

D12AHD

4CH AHD SD CARD MDVR



- Quattro D12AHD : Full-HD/HD/VGA ■
- SD Memory (up to 128GB) ■
- Digital Zooming ■
- Optional GPS ■
- Built-in G-Sensor ■
- Low Battery Monitoring (Cut-off Function) ■
- Temperature Working : -20~70°C Keeping : -40~85°C ■
- Recording File Type : AVI ■
- WIFI (App) (IOS & Android) ■
- PC Viewer (OS support : Windows XP or higher version) ■
- 30fps + 30fps + 30fps + 30fps (4CH) ■
- Voltage : 12~24V ■
- Size : 128 x 112 x 25 mm (Main body) ■
- Camera Voltage : 5V or 12V ■

MDVR

CAMERAS FOR D12AHD



M761FHD

Indoor / F-HD (5V)

Full HD 1080P Indoor Camera
1/3" FHD CMOS Image Sensor
Low illumination
Small and compact design
Dimension : 47mm X 30mm X 24mm



M721H/M691H

Outdoor / VGA / Side (5V)

VGA Side Water-proof Camera
1/3" CMOS Image Sensor
Angle : 50.8 ° (V), 71.4 ° (H), 103.2 ° (D)



M761HD/VGA

Indoor / HD & VGA (5V)

HD 720P / VGA 270K Indoor Camera
1/3" HD / CMOS Image Sensor
Low illumination
Small and compact design
Dimension : 54.1mm X 25mm X 30.7mm
(Indoor IR - Option)



M143FHD/HD/VGA

M177FHD/HD/VGA

Outdoor / HD & VGA (5V) (12V)

VGA Side and Rear Water-proof Camera
1/3" CMOS Image Sensor
Angle : 145 ° (D)



M831HD/M831FHD

Outdoor / IR / VGA / HD (5V) (12V)

HD IR Side and Rear Water-proof Camera
1/2.9" CMOS Image Sensor
Built-in 10 IR LEDs
Angle : 130 ° (D)
Dimension : 63mm X 48mm X 48mm



M291FHD/VGA

Outdoor / IR / VGA / HD (5V) (12V)

HD IR Side and Rear Water-proof Camera
1/4" or 1/3" CMOS Image Sensor
Angle : 76.3 ° (V), 100.2 ° (H), 132 ° (D)
Dimension : 67mm X 39mm X 58.4mm

D15^{"HD"}



4CH HD SD CARD / SSD MDVR

- Quattro D15 : HD 1280 x 720P 4CH
- SD Memory Card up to 128GB or SSD 1TB
- Digital Zooming
- Optional GPS
- Built-in G-Sensor
- Low Battery Monitoring (Cut-off Function)
- Temperature Working : -20~70°C Keeping : -40~85°C
- WIFI (App) (IOS & Android)
- PC Viewer (OS support : Windows XP or higher version)
- HDMI Out & CVBS output
- 30fps + 30fps + 30fps + 30fps (4CH)
- Voltage : 12~24V
- Size : 174 x 112 x 33 mm (Main body)



MDVR

CAMERAS FOR D15



M761HD

Indoor / HD

HD 1080P Indoor Camera
1/3" HD CMOS Image Sensor
Low illumination
Small and compact design
Dimension : 47mm X 30mm X 24mm



M143HD

Outdoor / VGA

HD Side and Rear Water-proof Camera
1/3" HD CMOS Image Sensor
Low illumination
Small and compact design
Dimension : 28mm X 34.2mm X 26mm



M177HD

Outdoor / HD & VGA

VGA Side and Rear Water-proof Camera
1/3" HD / CMOS Image Sensor
Low illumination
Small and compact design
Dimension : 32mm X 26mm X 49mm



M291HD

Outdoor / IR / VGA / HD

HD IR Side and Rear Water-proof Camera
1/2.9" CMOS Image Sensor
Built-in 7 IR LEDs
Angle : 130 ° (D)
Dimension : 67mm X 39mm X 58.4mm



"HD"

D16

2CH HD SD CARD MDVR

- Quattro D16 : HD 1280 X 720P 2CH ■
- SD Memory SD Card up to 128GB ■
- Optional GPS ■
- Built-in G-Sensor ■
- Low Battery Monitoring (Cut-off Function) ■
- WIFI (App) (IOS & Android) ■
- PC Viewer (OS support : Windows XP or higher version) ■
- 30fps +30fps (2CH) ■
- Voltage : 12~24V ■
- Size : 90 x 58 x 20 mm (Main body) ■

MDVR

CAMERAS FOR D16



M761HD

Indoor / HD

HD 1080P Indoor Camera
1/3" HD CMOS Image Sensor
Low illumination
Small and compact design
Dimension : 75mm X 33mm X 30mm



M721H/M691H

Outdoor / VGA / Side

VGA Side Water-proof Camera
1/3" CMOS Image Sensor
Angle : 50.8 ° (V), 71.4 ° (H), 103.2 ° (D)



M177HD

Outdoor / HD & VGA

VGA Side and Rear Water-proof Camera
1/3" HD CMOS Image Sensor
Low illumination
Small and compact design
Dimension : 32mm X 26mm X 49mm



M291HD

Outdoor / IR / VGA / HD

HD IR Side and Rear Water-proof Camera
1/2.9" CMOS Image Sensor
Built-in 7 IR LEDs
Angle : 130 ° (D)
Dimension : 37mm X 39mm X 58.4mm

D12 "VGA"



4CH SD CARD MDVR

- Quattro D12 : VGA 720x480 4CH
- SD Memory (up to 128GB)
- Digital Zooming
- Optional GPS
- Built-in G-Sensor
- Low Battery Monitoring (Cut-off Function)
- Temperature Working : -20~70°C Keeping : -40~85°C
- Recording File Type : AVI
- WIFI (App) (IOS & Android)
- PC Viewer (OS support : Windows XP or higher version)
- 30fps + 30fps + 30fps + 30fps (4CH)
- Voltage : 12~24V
- Size : 128 x 112 x 25 mm (Main body)



MDVR

CAMERAS FOR D12



M761VGA

Indoor / VGA

VGA 270K Water-proof Camera
1/3" CMOS Image Sensor
Low illumination
Small and compact design
Dimension : 54.1mm X 25mm X 30.7mm



M691H

Outdoor / VGA

VGA Side and Rear CMOS Water-proof Camera
1/3" CMOS Image Sensor
Angle : 50.8 ° (V), 71.4 ° (H), 103.2 ° (D)
Dimension : 21mm X 22.5mm X 21mm



M731VGA

Indoor / VGA

VGA 270K Water-proof Camera
1/3" CMOS Image Sensor
Low illumination
Small and compact design
Dimension : 52mm X 32.5mm X 27.5mm



M143H

Outdoor / HD & VGA

VGA Side and Rear 410K Water-proof Camera
1/3" CMOS Image Sensor
Angle : 145 ° (D)
Dimension : 28mm X 34.2mm X 26mm



M721H

Outdoor / VGA / Side

VGA 410K Water-proof Camera
1/3" CMOS Image Sensor
Angle : 50.8 ° (V), 71.4 ° (H), 103.2 ° (D)
Dimension : 52mm X 28mm X 20mm



M291

Outdoor / IR / VGA / HD

VGA IR Rear 270K Water-proof Camera
1/4" or 1/3" CMOS Image Sensor
Angle : 76.3 ° (V), 100.2 ° (H), 132 ° (D)
Dimension : 67mm X 39mm X 58.4mm

BLACKBOX



"B4HD-Dual HD Built-in" **B4** 2CH HD CAR BLACKBOX

- B4HDH : Dual Channel Camera (Built-in 2CH HD)
- B4HDL : 1+1 Channel HD Camera (Built-in 1CH HD & External HD Camera)
- Dual Camera (HD 2CH Display)
- External GPS (Option) -B4HDH & B4HDL
- Built-in G-Sensor/Microphone/Speaker
- Micro SD Memory Card (upto 32GB)
- Play HD / Battery Monitorings
- Built-in 4 IR LEDs
- Size : 48mm x 22mm x 85mm
- Free Voltage : DC 12~24V

HD EXTERNAL CAMERAS



M143



M290



M711



"Full HD" **B7** FOLDABLE LCD HD CAR BLACKBOX

- B7FHD : 2CH Full HD & HD (1980x1080p & 1280x720p)
- (Built-in Full HD 2M Sony & External HD Camera)
- B7HD : 2CH HD & VGA (1280x720p & 640x480p)
- (Built-in HD 2M & External VGA Camera)
- Built-in 3"(B7FHD) or 2.4"(B7HD) LCD Screen
- Resolution Full HD(1980x1080p) & HD(1280x720p)
- and HD(1280x720p) & VGA
- Micro SD Memory Card(Upto 32GB)
- Built-in G-Sensor / Microphone / Speaker
- Size : 92.5mm x 88mm x 85.2mm
- Free Voltage : DC 12~24V



"Single HD" **B6** 1CH HD CAR BLACKBOX

- B6HD : 1CH Channel Camera (Built-in 1CH HD Camera)
- 1CH Display (HD)
- External GPS (Option)
- Built-in G-Sensor
- Emergency & Continuous Recording
- Play Images and Audio Data
- Micro SD Memory Card (upto 32GB)
- Play HD
- Battery Monitoring
- Free Voltage : DC 12~24V



HD EXTERNAL CAMERAS



M143



M290



M711



"HD" **B8** 1+1CH (HD+VGA) CAR BLACKBOX

- B8HD2 : 1+1CH HD & VGA Camera (Built-in 1CH HD & External VGA Camera)
- B8HD : 1CH HD Camera (Built-in 1CH HD Camera)
- B8H : 1+1CH VGA Camera (Built-in 1CH VGA & External VGA Camera)
- B8M : 1CH VGA Camera (Built-in 1CH VGA Camera)
- 2CH Display (HD or VGA)
- Built-in G-Sensor / Microphone / Speaker
- Micro SD Memory Card (upto 32GB)
- Play HD or VGA
- Size : 85mm x 50mm x 19mm
- Free Voltage : DC 12~24V

BLACKBOX

B9 "HD"



1+1CH (HD+VGA) CAR BLACKBOX

- B9HD2 : 1+1 CH HD Camera (Built-in 1CH HD & External VGA Camera)
- B9HD : 1CH HD Camera (Built-in 1CH HD Camera)
- 2CH Display HD + VGA
- External GPS (Option)
- Built-in G-Sensor/Microphone/Speaker
- Play Images and Audio Data
- Micro SD Memory Card (upto 32GB)
- Size : 64mm x 47mm x 19mm
- Free Voltage : DC 12~24V



B102 "HD"



1+1CH (HD+VGA) CAR BLACKBOX

- B102HD : 2CH HD & VGA (1280x720p & 640x480p) (Built-in HD 2M & External VGA Camera)
- Resolution HD(1280x720p) and HD(1280x720p) & VGA
- External GPS (Option)
- Play Images and Audio Data
- Micro SD Memory Card (upto 32GB)
- Battery Monitoring
- Built-in G-Sensor / Microphone / Speaker
- Size : 100mm x 34mm x 34mm
- Free Voltage : DC 12~24V



HD EXTERNAL CAMERAS



M143



M290



M761



M731

B10 "Full HD"



LCD FULL HD CAR BLACKBOX

- B10FHD : 2CH Full HD & HD (1980x1080p & 1280x720p) (Built-in Full HD 2M Sony & External HD Camera)
- Built-in 3.5" LCD Touch Screen
- External GPS (Option)
- Play Images and Audio Data
- Micro SD Memory Card (upto 64GB)
- Battery Monitoring
- Built-in G-Sensor / Microphone / Speaker
- Size : 112mm x 62mm x 36mm
- Free Voltage : DC 12~24V

OPTION

- 3G / 4G Network
- Worldwide OBD2 Connector



HD EXTERNAL CAMERAS



M143HD



M177HD



M291HD



M761HD

B12 "Full HD"



LCD FULL HD CAR BLACKBOX

- B12FHD : 2CH Full HD & HD (1980x1080p & 1280x720p)
- Built-in 3.5" LCD Touch Screen
- External GPS (Option)
- Play Images and Audio Data
- Micro SD Memory Card (upto 32GB)
- Battery Monitoring
- Built-in G-Sensor / Microphone / Speaker
- Size : 112mm x 62mm x 36mm
- Free Voltage : DC 12~24V



HD EXTERNAL CAMERAS



M761AHD

HD CAMERA (water proof/Indoor)



M291HD



"HD" HD MAXIM/TI CAMERA HD COLOR MOBILE CAMERA

- HD-SDI Color Waterproof Camera ■
- 95~145 ° Wide Viewing Angle ■
- Low-illumination ■
- Aluminum Die-casting Housing ■
- Small & Compact Design ■
- Water-proof Camera and Cable ■
- LVDS Serdes(Maxim, TI etc) / AHD ■
- 5V Only ■
- Mega Pixel Camera ■
- Built-in 7 IR LEDs ■

HD CAMERA



M143HD



M177HD



"HD" HD MAXIM/TI CAMERA HD COLOR MOBILE CAMERA

- HD-SDI Color Waterproof Camera ■
- 95~145 ° Wide Viewing Angle ■
- Low-illumination ■
- Aluminum Die-casting Housing ■
- Small & Compact Design ■
- Water-proof Camera and Cable ■
- HD-SDI / LVDS Serdes(Maxim, TI etc) / AHD ■
- 5V Only ■
- 1M/2M Pixel Camera ■
- IP 68 (M143HD / M177HD) ■

HD CAMERA



M761B7



**M761B10
M761D16**



"HD" HD MAXIM/TI CAMERA HD COLOR MOBILE CAMERA

- HD-SDI Color Waterproof Camera ■
- 95~145 ° Wide Viewing Angle ■
- Low-illumination ■
- Aluminum Die-casting Housing/Plastic ■
- Small & Compact Design ■
- Water-proof Camera and Cable ■
- HD-SDI / LVDS Serdes(Maxim, TI etc) / AHD ■
- 5V Only ■
- 1M/2M Pixel Camera ■
- IP 68 ■

AHD CAMERA (water proof/Indoor)

Full HD CAMERA "Full HD" HD COLOR MOBILE CAMERA

- Full HD Color Waterproof Camera
- 95~145 ° Wide Viewing Angle
- Low-illumination
- Aluminum Die-casting Housing
- Water-proof Camera and Cable
- HD-SDI / LVDS Serdes(Maxim, TI etc)
- 5V / 12V
- Mega Pixel Camera



M761FHD M761HD

AHD CAMERA

Full HD & HD CAMERA "Full HD" HD COLOR MOBILE CAMERA

- Full HD Color Waterproof Camera
- HD Color Waterproof Camera
- 95~145 ° Wide Viewing Angle
- Low-illumination
- Aluminum Die-casting Housing
- Water-proof Camera and Cable
- AHD / LVDS Serdes(Maxim, TI etc)
- 5V / 12V
- 1M/2M Pixel Camera
- IP 68



M143FHD M177FHD
M143HD M177HD

AHD CAMERA

Full HD & HD CAMERA "Full HD" HD COLOR MOBILE CAMERA

- Full HD Color Waterproof Camera
- HD Color Waterproof Camera
- 95~145 ° Wide Viewing Angle
- Low-illumination
- Aluminum Die-casting Housing
- Water-proof Camera and Cable
- AHD / LVDS Serdes(Maxim, TI etc)
- 5V / 12V
- 1M/2M Pixel Camera
- IP 68



M291FHD M831FHD/HD

GATE TYPE



M140



M170

CCD / CMOS

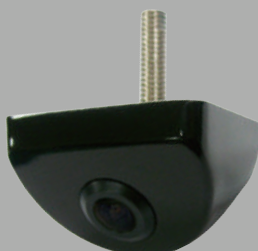
COLOR MOBILE CAMERA

- High Quality Color Waterproof Camera ■
- 130~160 ° Wide Viewing Angle ■
- Low-illumination ■
- Aluminum Die-casting Housing ■
- Small & Compact Design ■
- Water-proof Camera and Cable ■
- Color : Black, White and Silver ■
- 380 / 540 / 700 TV Line ■
- IP 68 ■

CCD / CMOS CAMERA



M190



M660

CCD / CMOS

COLOR MOBILE CAMERA

- High Quality Color Waterproof Camera ■
- 130~160 ° Wide Viewing Angle ■
- Low-illumination ■
- Aluminum Die-casting Housing ■
- Small & Compact Design ■
- Water-proof Camera and Cable ■
- Color : Black, White and Silver ■
- 380 / 540 / 700 TV Line ■
- IP 68 ■

CCD / CMOS CAMERA



M610



M640

CCD / CMOS

COLOR MOBILE CAMERA

- High Quality Color Waterproof Camera ■
- 130~160 ° Wide Viewing Angle ■
- Low-illumination ■
- Aluminum Die-casting Housing ■
- Small & Compact Design ■
- Water-proof Camera and Cable ■
- Color : Black, White and Silver ■
- 380 / 540 / 700 TV Line ■
- IP 68 ■

BRACKET TYPE

CCD / CMOS

COLOR MOBILE CAMERA

- High Quality Color Waterproof Camera
- 130~160 ° Wide Viewing Angle
- Low-illumination
- Aluminum Die-casting Housing
- Small & Compact Design
- Water-proof Camera and Cable
- Color : Black, White and Silver
- 380 / 540 / 700 TV Line
- IP 68



M142

CCD / CMOS CAMERA

CCD / CMOS

COLOR MOBILE CAMERA

- High Quality Color Waterproof Camera
- 130~160 ° Wide Viewing Angle
- Low-illumination
- Aluminum Die-casting Housing
- Small & Compact Design
- Water-proof Camera and Cable
- Color : Black, White and Silver
- 380 / 540 / 700 TV Line
- IP 68



M176

CCD / CMOS CAMERA

CMOS

COLOR MOBILE CAMERA

- High Quality Color Waterproof Camera
- 130~160 ° Wide Viewing Angle
- Low-illumination
- Aluminum Die-casting Housing
- Small & Compact Design
- Water-proof Camera and Cable
- Color : Black, White and Silver
- 380 / 540 / 700 TV Line
- IP 68



M691

SIDE TYPE



M691H

CMOS

SIDE[L/R] MOBILE CAMERA

- High Quality Color Waterproof Camera ■
- 90~145 ° Wide Viewing Angle ■
- Low-illumination ■
- Aluminum Die-casting Housing ■
- Small & Compact Design ■
- Water-proof Camera and Cable ■
- 380TV / 540TV / 700TV Line Available ■
- IP 68 ■

CCD / CMOS CAMERA



M721H

CMOS

SIDE[L/R] MOBILE CAMERA

- High Quality Color Waterproof Camera ■
- 90~145 ° Wide Viewing Angle ■
- Low-illumination ■
- Aluminum Die-casting Housing ■
- Small & Compact Design ■
- Water-proof Camera and Cable ■
- 380TV / 540TV Line Available ■
- IP 68 ■

CCD / CMOS CAMERA

INDOOR TYPE

CMOS

CMOS COLOR MOBILE CAMERA

- 1/4" VGA Color CMOS ■
- 1/3" High CMOS ■
- High Quality Color Camera ■
- Pixel Size 5.60um x 5.60um ■
- Low-illumination Small & Compact Design ■
- DC 5V / 12V ■
- 380TV / 540TV Line Available ■



M711



M761

OUTDOOR IR TYPE

M220

IR REAR VIEW CAMERA

- Sony 1/3" Super HAD CCD : 420TV & 600TV Lines
- High Quality Color Waterproof Camera
- Low-illumination : 0.1 Lux
- Aluminum Die-casting Housing
- 130 ° Wide Viewing Angle
- Water-proof Camera and Cable
- Color : Black
- Built-in 5 IR LEDs



IR CAMERA

M821HH | 831HH

IR REAR VIEW CAMERA

- Sony 1/3" Super CMOS : 560TV & 700TV Lines
- High Quality Color Waterproof Camera
- Low-illumination : 0.1 Lux
- Aluminum Die-casting Housing
- 130 ° Wide Viewing Angle
- Water-proof Camera and Cable
- Color : Black
- Built-in 14/10 IR LEDs



IR CAMERA

M260

IR REAR VIEW CAMERA

- Sony 1/3" Super HAD CCD : 270K Pixels & 380TV Lines
- High Quality Color Waterproof Camera
- Aluminum Die-casting Housing
- IP 67 Rate
- 15M Real Visible Range in any Lighting Condition
- Normal Resolution IR DAY / Night Camera (20Pcs of IR)
- Separated Power Board with SMART SAFETY CONTROL enable
- Stable and Long Lasting LED Operation



OUTDOOR IR TYPE



M290 | M291HH IR REAR VIEW CAMERA

- M291H : 1/3" High Super CMOS / 700TV Lines
- M290 : 1/4" HAD CCD / 420TV & 600TV Lines
- High Quality Color Waterproof Camera
- Low-illumination : 0.1 Lux
- Aluminum Die-casting Housing
- 130~145 ° Wide Viewing Angle
- Water-proof Camera and Cable
- Color : Black & White
- Built-in 7 IR LEDs

IR CAMERA



M810 | M811HH MULTI VIEW [REAR/SIDE] CAMERA

- M811H : 1/3" High Super CMOS / 560TV Lines
- M810 : 1/3" 270K CCD / 420TV & 600TV Lines
- Rear / Left / Right Multi Camera
- High Quality Color Waterproof Camera
- Low-illumination : 0.1 Lux
- Aluminum Die-casting Housing
- 90~120 ° Viewing Angle
- Water-proof Camera and Cable
- Housing Color : Black
- Built-in 8 IR LEDs



Left View

Lens 360° Rotatable
Rear View

Right View

IR CAMERA



M430 VANDAL-PROOF DOME CAMERA

- Sony 1/3" Super HAD CCD : 420TV & 600TV Lines
- M430H : 410K Pixels
- High Quality Color Waterproof Camera
- Low-illumination : 0.1 Lux
- Aluminum Die-casting Design
- 130 ° Wide Viewing Angle
- Water-proof Camera and Cable
- Color : Black, White and Silver
- Built-in 11 IR LEDs

OUTDOOR DOME TYPE

M450

VANDAL-PROOF DOME CAMERA

- Ultra Small Size
- Sony 1/3" Super HAD CCD : 410K Pixels & 520TV Lines
- High Quality Color Waterproof Camera
- Low-illumination : 0.1 Lux
- Aluminum Die-casting Design
- 120 ° Wide Viewing Angle
- Water-proof Camera and Cable
- Color : Black, White and Silver
- Built-in 10 IR LEDs



VEHICLE CAMERA

M410 | 420

M410IR | 420IR

MOBILE DOME CAMERA

- Sony 1/3" Super HAD CCD : 270K Pixels 420TV Lines
- High Quality Color Waterproof Camera
- Low-illumination : 0.5 Lux
- Aluminum Die-casting Design
- 60~130 ° Wide Viewing Angle
- Water-proof Camera and Cable
- Color : Black, White and Silver
- Outdoor & Indoor Mobile Camera
- IP 66 Rate
- 10 IR LEDs (M410IR / 420IR Model)



TILTING CAMERA

M330 – Under Developing

MOTORIZED TILTING REAR CAMERA

- Sony 1/3" Super HAD CCD : 270K Pixels & 380TV Lines
- High Quality Color Waterproof Camera
- Low-illumination : 0.1 Lux
- Aluminum Die-casting Design
- 130 ° Wide Viewing Angle
- Water-proof Camera and Cable
- Built-in 7 IR LEDs
- IP 67 Rate



PLUMBING CAMERA



H120 | H130 | H140

PLUMBING CAMERA

- Waterproof Design & Scratch-Resistance Steel Case ■
- High Quality Color Waterproof CCD Camera ■
- 10 or 12 White LEDs ■
- Built-in Protector Circuit Against Reverse Connection ■
- Bore-hole Inspection, Pipe Inspection, Tank Inspection Camera ■
- Chromium-Plated Case ■
- H120 : 1/3" HAD Color CCD : 270K Pixels & 420TV Lines ■
- H130 : 1/3" HAD Color CCD : 410K Pixels & 480TV Lines ■
- H140 : 1/3" HAD Color CCD : 270K Pixels & 420TV Lines ■

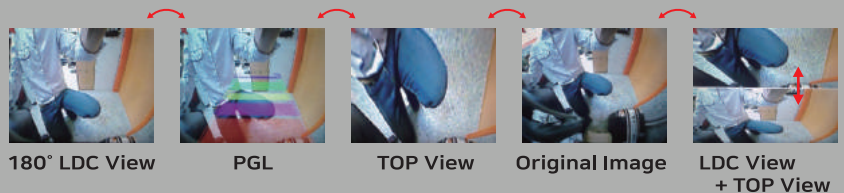
PANORAMA CAMERA



M143PHD

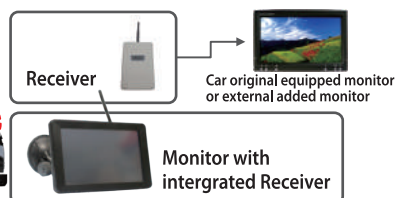
180° PANORAMA CAMERA

- Backup Camera ■
- Mirror Replacement Cameras ■
- Driver Monitoring ■
- Multi-view Cameras ■



180° View ↔ 180° Correction ↔ TOP View ↔ Multi View

WIRELESS SYSTEM



WIRELESS SYSTEM

RX/TX SYSTEM

- Wireless Frequency ■
- Monitor Connection ■
- Status of signal Connection ■
- Data Transmission ■
- Communication distance ■
- Camera ■

SPECIAL PRODUCT

T1

CAR PARKING SYSTEM [4.3inch LCD + Camera + Sensor]

- 4.3 inch LCD Display
- Easy mounting on the room mirror without a screw
- Four different alarm sounds
- Distance in meter
- Rear-View camera installed in the back side
- Ultrasonic sensors installed in the rear bumper
- DC 12V or 24V or Free volts (option)
- Length of cable : 2.5 meter

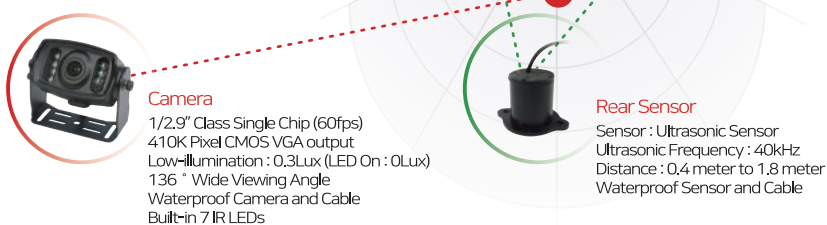


LCD SPECIFICATIONS

Input Power : 12V or 24V or Free voltage (option)
Operating Temperature : -20°C~65°C
Length of Cable : 2.5 meter
(Longer cable are available)

CAMERA/SENSOR SPECIFICATIONS

Input Power : 12V or 24V or Free voltage (option)
Operating Temperature : -20°C~65°C
Length of Cable : 8 meter
(Longer cable are available)



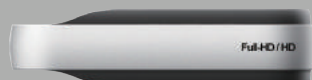
SPECIAL PRODUCT

D17 "Full HD"



WATER-PROOF 1CH & 2CH AHD MDVR

- Quattro D17 : HD 1280 X 720P
- SD Memory SD Card up to 128GB
- Optional GPS
- Built-in G-Sensor
- Low Battery Monitoring (Cut-off Function)
- WIFI (App) (IOS & Android)
- PC Viewer (OS support : Window XP or higher version)
- 30fps (2CH Option)
- Voltage : 12~24V
- Size : 70 x 50 x 17mm (Main body)
- Full-HD / HD / VGA Type



CAMERAS FOR D17



M761FHD

Indoor / F-HD

Full HD 1080P Indoor Camera
1/3" FHD CMOS Image Sensor
Low illumination



M143FHD

Outdoor / HD & VGA

VGA Side and Rear Water-proof Camera
1/3" CMOS Image Sensor
Angle : 145 ° (D)



M177FHD

Outdoor / HD & VGA

VGA Side and Rear Water-proof Camera
1/3" CMOS Image Sensor
Angle : 145 ° (D)



M291FHD

Outdoor / IR / VGA / HD

VGA IR Side and Rear Water-proof Camera
1/4" or 1/3" CMOS Image Sensor
Angle : 76.3 ° (V), 100.2 ° (H), 132 ° (D)

LCD MONITOR



"HD"

L8HD 7" LCD MONITOR

- 173(H) x 118.5(V) x 19.5(T) m/m ■
- 7.0inch WVGA TFT-LCD with TSP ■
- Resolution : 800 x 3(RGB) x 480 ■
- Video Input / Cam Video Input / HDMI Input ■
- IR Remote Control (Built-in IR Remocon-sensor) ■
- Wireless Audio IR transmitter included (Option) ■
- Function Button (Power, Source, Menu, Up, Down) ■
- Automatic Light Sensor (Dimming Control) (Option) ■

MONITOR



"HD"

L9HD 9" LCD MONITOR

- 239(H) x 133(V) x 22(T) m/m ■
- 9.0inch WVGA TFT-LCD with TSP ■
- Resolution : 800 x 3(RGB) x 480 ■
- Video Input / Cam Video Input / HDMI Input ■
- IR Remote Control (Built-in IR Remocon-sensor) (Option) ■
- Smartphone Rechargeable Power Supply (micro-USB) (Option) ■
- Function Button (Power, Source, Menu, Up, Down, ASPECT) ■

LCD MONITOR

L4

6.2" ROOM MIRROR LCD MONITOR

- 6.2" New Panel(PVI) / Aspect Ratio 16:9
- Resolution 440(H)x3(RGB)x234(H) Pixels 2
- 2 AV Input / On Screen Display & Full Remote Control
- Dimension (Inch (12.3"x4"x1.88" / Multi Color System
- Built In Speaker / Built In Tuner / 400 cd/m
- Monitor Function in Reverse Gear
(With Rear View Camera Priority)



L10

4.3" ROOM MIRROR LCD MONITOR

- 4.3 inch LCD Display
- Easy mounting on the room mirror without a screw
- DC 12V or 24V or Free volts (option)



MONITOR

L7

LCD MONITOR

- 7"Brand New Panel / Aspect Ratio 16:9
- 2 Video Inputs & Audio Inputs
- Resolution 1440(H)x230(V) Pixels/Luminance 350cd/m²
- Monitor Function in Reverse Trigger
- Auto NTSC, PAL-BGDHI, PAL-N Change Function
- Full OSD Function
- Full Functional IR Remote Control
- Screen Noise Deduction (Blue Back Screen)



Achieving our Vision of Becoming a Top Global brand

Huvitech is committed to the development of HUMAN Vision TECHNOLOGY in order to achieve a harmonic connection between society and your safety.

Huvitech Co., Ltd.
#201-711 & 712 Chunui Techno Park II 18, Bucheon-Ro 198 Beon-Gil, Wonmi-Gu, Bucheon-Si, Gyeonggi-Do, 14557, Korea
Tel +82-32-623-8266~8 / Fax +82-32-623-0960 / www.huvitech.com / E-mail : huvitech15@huvitech.com July 2017

